

# Wonderland Stream Gallery

*Corporate Residential*

Role: Team Lead (Level1)





# Wonderland Stream Gallery

1,759 sqm, Dongguan China, 2020

Role: Team Lead (Level 1)  
Studio: Ministry of Design

The project is a holistic design of architecture, interiors, landscape and signage for a temporary sales gallery for a luxury condominium in Dongguan that will be reused as the main lobby and common facilities of the future development.

As a significant banyan tree on the development site was earmarked for preservation, we developed a fantastical tale tied to the tree as a narrative to the development. The banyan tree has long been a symbol for longevity, and gives positive association for this residential property, which has facilities for multi-generation households. This “Tree of Life” anchors the design for both the Ground Floor (Sales Gallery) and the Basement Floor (Clubhouse). We drew a story of a harmonious community springing from the shade of a resident “Tree of Life,” the design incorporates abstracted elements from a village set within nature, drawing inspiration from native Ling Nan architecture, and the majestic banyan tree with its impressive canopy and root system.

Starting from the central gateway entrance and enveloping both wings of the sales gallery, the visitor enters underneath the grand undulating ceiling forms inspired by the seascape of traditional village roofs. The ceiling scape unifies and ties the different functions of the sales gallery; from reception, movie theatre, feature tea brewing bar, model and exhibition areas to the sales discussion areas. References to the banyan tree are abstracted to form patterns and forms, such as the flowing floor pattern inspired by the ground roots, to the sweeping screens inspired from the aerial roots swaying gently in the breeze.

The project leadership was shared, with myself leading the deliverables for Level 1 and signage design package, and my colleague leading Basement 1 (images not shown).





# Wonderland Stream Gallery

1,759 sqm, Dongguan China, 2020

Role: Team Lead (Level 1)  
Studio: Ministry of Design

**PROJECT INSIGHT:**

As the client wanted the architectural concept to be a large glassy box that glows like a lantern in the evening, we wanted to devise a spatial gesture to visually link the spaces across the length of the gallery without compromising the continuous glassy facade.

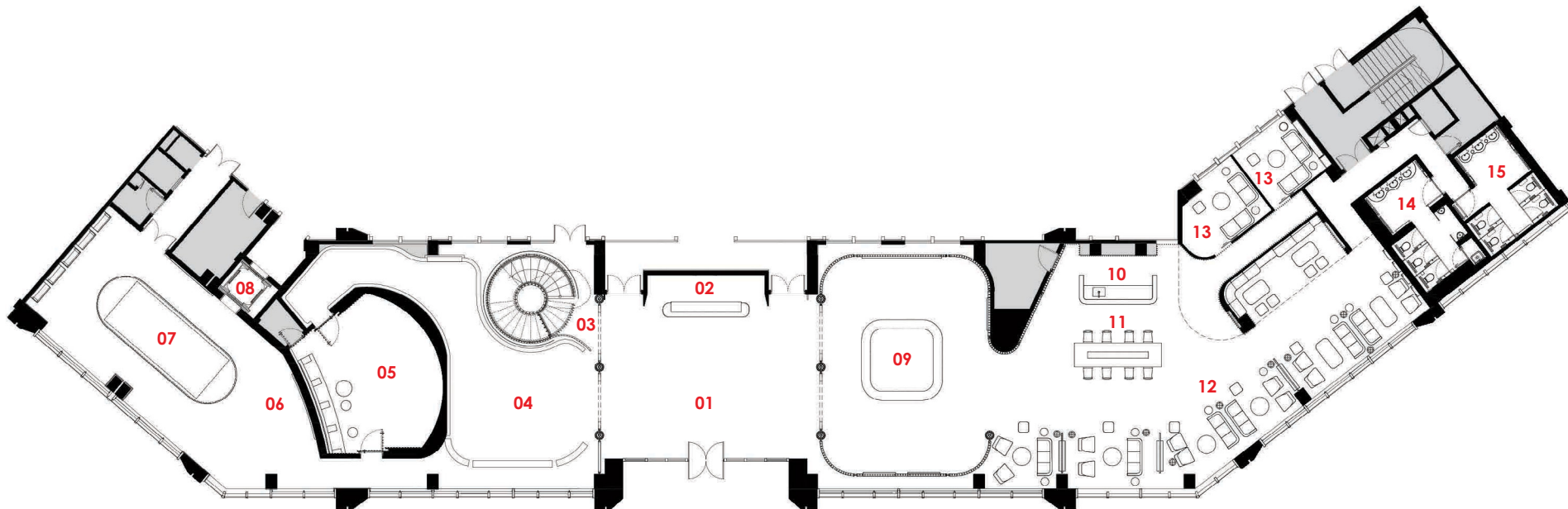
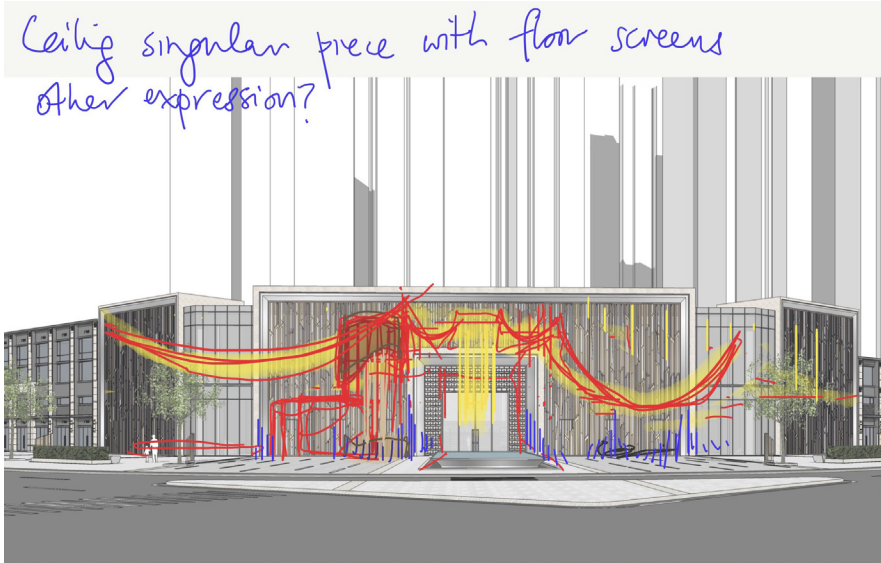
The ceiling feature took shape, inspired by the form of a sea of village roofs to sweep and flow through the different spaces, with different heights, lowered at the discussion areas to create intimacy, and soaring upwards to create grandeur for the model gallery.



引用中国的屋顶海洋  
REFERENCE TO A SEA OF CHINESE ROOFS



引用榕树  
REFERENCE TO BANYAN TREE



**LEGEND:**

1. Lobby

2. Reception

3. Stairs to Basement

4. Developer Information Exhibition

5. Movie Theatre

6. City Planning Exhibition

7. City Model

8. Lift to Basement
9. Development Model

10. Bar and Beverage Counter

11. Ceremonial Tea Bar

12. Discussion Area

13. VIP room

14. Male Toilet

15. Female Toilet

Description (clockwise from top left):  
1. Concept reference of Lingnan architecture and the banyan tree  
2. Initial conceptual sketch of the ceiling feature  
3. Layout plan of Level 1 Gallery & Sales Area